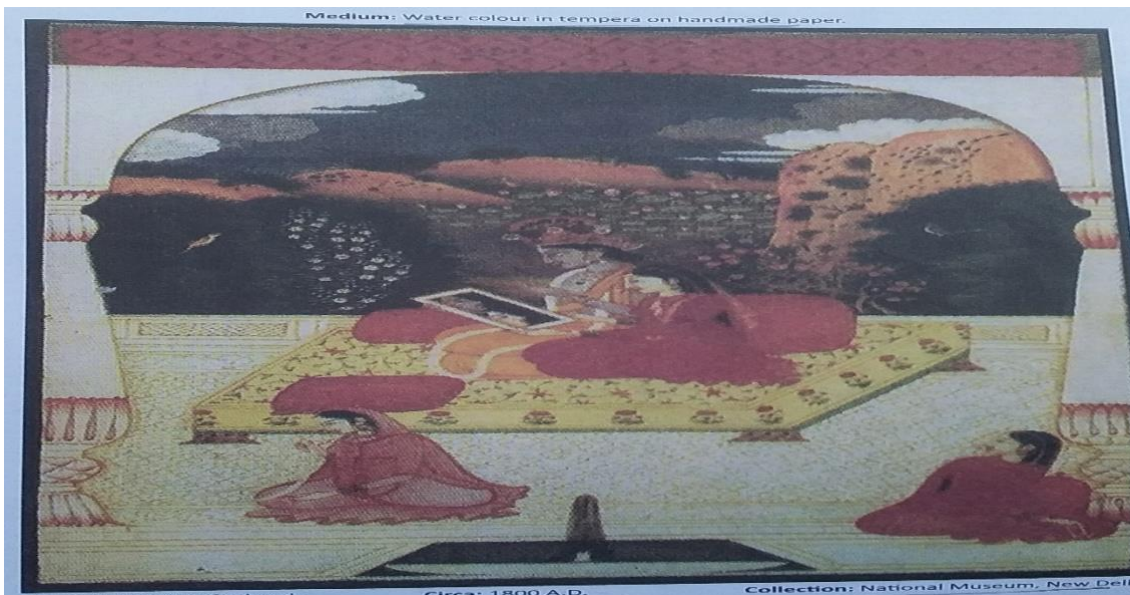


PAINTING STUDY MATERIAL FOR CLASS 12TH BASED ON NCERT

RADHA KISHOR MONDAL

Date :30.08.21



and they are very attentively looking at each other's image in the mirror. Two well dressed female attendants are sitting in the foreground.

Krishna is wearing a tiara and long white flower garland, yellow dhoti and upper part is semi-clothed. Radha is wearing traditional red Ghaghra and Choli. There are red pillows supporting the back of Radha and Krishna.

The interior part of the terrace has been decorated with typical white and yellow colours. The stylised depiction of foliage with flowering plants, hilltops bathed in sunrays, a lake with blooming lotuses and water-birds add special charm to the background and the lovely postures of Radha and Krishna create a romantic atmosphere. The gold has been used lavishly. Sky is black and tufts of woolly clouds are painted in white and grey colour with special circular patterns.

In the middle of the foreground there is a fountain. Arch and interior of the terrace bear the influence of Mughal style.

Questions

1. Write an account on the Pahari School of Miniature Painting.
2. Describe the origin and main features of the Pahari School of Miniature Painting.
3. Write down the main features of Kangra and Basohli.
4. Write short note on—'Krishna with Gopis'.
5. Evaluate the aesthetic grandeur of the painting 'Cosmic dance of Shiva'—based on its (a) Name of the Sub-school, (b) Medium, (c) Subject-matter and (d) Composition.
6. How far has the artist been successful in depicting the subject-matter and composition of the painting—'Radha & Krishna looking into a mirror'? Give your answer in short.
7. Which human life values reflect by the artist in the painting 'Bharat worshipping charan-padukas of Ram'? Give your answer on the basis of the aesthetical parameters.

To be continues.....