

VIDYA BHAWAN BALIKA VIDYAPEETH

STUDY MATERIAL SCIENCE

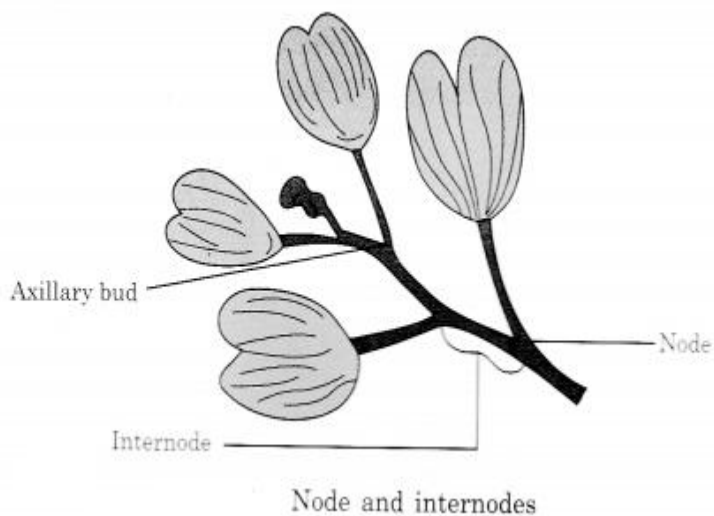
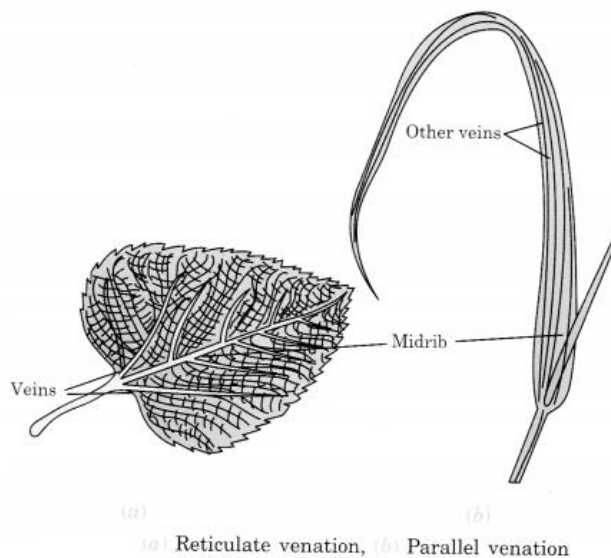
CLASS-VI

Date : 09/09/2020

Teacher : Poonam Kumari

► 7. Getting to know plants

- **Node** : Places where leaves and branches are joined to stem are called nodes.
- **Internode** : The part of stem between two nodes is called internode.



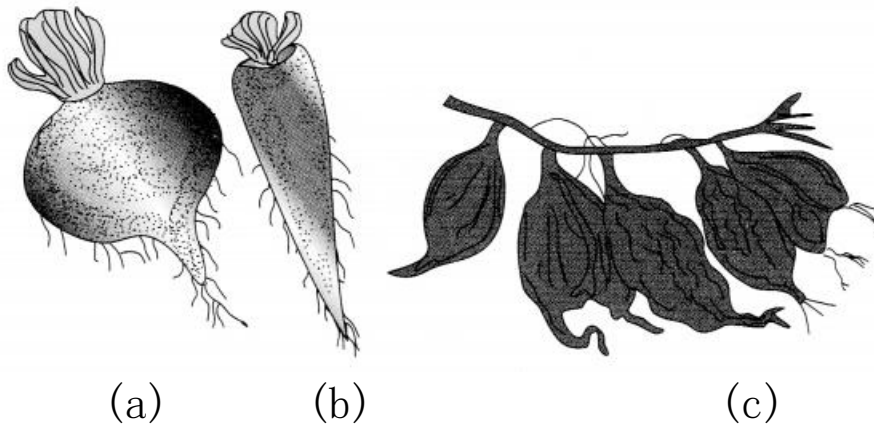
- **Function of leaves :**

- **Transpiration:** It is the process of evaporation of water from the surface of leaves.

- **Photosynthesis:** Green leaves synthesize food with the help of sunlight, air and water by a process called photosynthesis.

- **Roots :**

- Roots are mostly the underground part of the plant.
 - They absorb water and mineral from the soil.
 - They hold the soil firmly to keep the plant upright.
 - Some roots store food and become plump.



Modified roots of (a) beet, (b) carrot & (c) taproot