

VIDYA BHAWAN BALIKA VIDYAPEETH

STUDY MATERIAL SCIENCE CLASS-VII

Date 31/08/2020

Teacher : Poonam Kumari

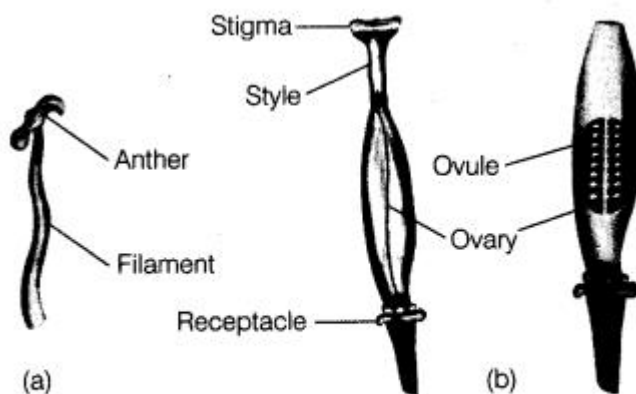
► 8. Reproduction in plants

Parts of a flower :

The main parts of a flower are

(iv) **Pistil** : It is the female reproductive part of a flower that lies in the centre of a flower. These are a flask-shaped structure which is made up of three parts, i.e. stigma, style and ovary.

The top part of the pistil is called **stigma**. It receives the pollen grains from the anther during pollination. The middle part of the pistil is tube-like structure called **style** which connects stigma to the ovary.



Reproductive parts of a flower:
(a) Stamen and (b) Pistil

The swollen bottom part at the base of pistil is called **ovary**. The ovary makes ovules and stores them. These ovules contain the female sex cells also called **an egg cell**. It is the female gamete of flower. Pistil is also called as **carpel**. The pistil is surrounded by several stamens.

The base of the flower on which all the parts of the flower are attached is called **receptacle**.